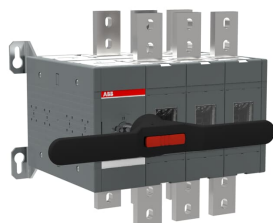


PRODUCT-DETAILS

OT1600E03CP

OT1600E03CP CHANGE-OVER SWITCH



General Information

Extended Product Type	OT1600E03CP
Product ID	1SCA022872R1840
EAN	6417019339009
Catalog Description	OT1600E03CP CHANGE-OVER SWITCH
Long Description	Including a black plastic IP65 I-0-II pistol type handle (see the table below), shaft and bolt set for the cable connection. Handle padlockable in the 0-position, door interlock in the I- and lipositions and when padlocked.

Ordering

Minimum Order Quantity	1 piece
Customs Tariff Number	85365080
Country of Origin	Finland (FI)

Popular Downloads

Data Sheet, Technical Information	1SCC303003C0201
Instructions and Manuals	1SCC301049M0002

Dimensions

Product Net Width	400 mm
-------------------	--------

Product Net Height	372 mm
Product Net Depth / Length	309 mm
Product Net Weight	38.22 kg 84.26 lb

Technical

Rated Operational Current AC-21A (I_e)	(380 ... 415 V) 1600 A (500 V) 1600 A (690 V) 1600 A
Rated Operational Current AC-22A (I_e)	(380 ... 415 V) 1600 A (500 V) 1600 A (690 V) 1600 A
Rated Operational Current AC-23A (I_e)	(380 ... 415 V) 1600 A (500 V) 1600 A (690 V) 1600 A
Rated Operational Current AC-31B (I_e)	(380 ... 415 V) 1600 A
Rated Operational Current AC-33B (I_e)	(380 ... 415 V) 1600 A
Rated Operational Power AC-23A (P_e)	(380 ... 415 V) 710 kW (500 V) 900 kW (690 V) 1200 kW
Conventional Free-air Thermal Current (I_{th})	q = 40 °C 1600 A
Rated Impulse Withstand Voltage (U_{imp})	12 kV
Rated Insulation Voltage (U_i)	1000 V
Rated Operational Voltage	1000 V
Rated Short-time Withstand Current Low Voltage (I_{cw})	for 1 s 50 kiloampere rms
Power Loss	48 W
Pollution Degree	3
Handle Color	Black
Handle Type	Handle and shaft included Mechanism at the End of the Switch 03 (Left Side)
Distance Between Phases	Standard
Position of Line Terminals	Top In - Bottom Out, Bottom In - Top Out
Operating Mode	Front operated
Mounting Type	Base mounting
Number of Poles	3
Degree of Protection	Front IP20
Terminal Width	50 mm
Tightening Torque	acc. IEC 60947-1 50 ... 75 N·m
Transition Type	Open

Environmental

Environmental Information	1SCC303050D0201
---------------------------	-----------------

Certificates and Declarations (Document Number)

Declaration of Conformity - CE	1SCC303017D0201
Environmental Information	1SCC303050D0201
Instructions and Manuals	1SCC301049M0002
RoHS Information	1SCC301149D0202

Container Information

Package Level 1 Units	1 piece
Package Level 1 Width	394 mm 15.51 in
Package Level 1 Depth / Length	534 mm 21.02 in
Package Level 1 Height	368 mm 14.49 in
Package Level 1 Gross Weight	40.32 kg 88.89 lb
Package Level 1 EAN	6417019339009

Classifications

Object Classification Code	Q
ETIM 5	EC000216 - Switch disconnecter
ETIM 6	EC000216 - Switch disconnecter
ETIM 7	EC000216 - Switch disconnecter
ETIM 8	EC000216 - Switch disconnecter
UNSPSC	39122233
WEEE Category	5. Small Equipment (No External Dimension More Than 50 cm)
E-Number (Finland)	3600149

Categories

Low Voltage Products and Systems → Switches → Change-over and Transfer Switches → Manual Change-over Switches

