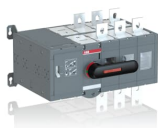


PRODUCT-DETAILS

OTM800E3CM230C

OTM800E3CM230C MOTORIZED C/O SWITCH



General Information

Extended Product Type	OTM800E3CM230C
Product ID	1SCA103570R1001
EAN	6417019379654
Catalog Description	OTM800E3CM230C MOTORIZED C/O SWITCH
Long Description	Including a handle for manual operation, bolt kit with nut and washers for all terminals and male connectors for control circuits. Include a storage clip for the handle and spare fuses.

Ordering

Minimum Order Quantity	1 piece
Customs Tariff Number	85365080
Country of Origin	Finland (FI)

Popular Downloads

Data Sheet, Technical Information	1SCC303003C0201
Instructions and Manuals	1SCC303002M0204

Dimensions

Product Net Width	411 mm
-------------------	--------

Product Net Height	250 mm
Product Net Depth / Length	299 mm
Product Net Weight	22 kg

Technical

Rated Operational Current AC-21A (I_e)	(380 ... 415 V) 800 A (500 V) 800 A (690 V) 800 A
Rated Operational Current AC-22A (I_e)	(380 ... 415 V) 800 A (500 V) 800 A (690 V) 800 A
Rated Operational Current AC-23A (I_e)	(380 ... 415 V) 800 A (500 V) 800 A (690 V) 800 A
Rated Operational Current AC-31B (I_e)	(380 ... 415 V) 720 A
Rated Operational Current AC-33B (I_e)	(380 ... 415 V) 650 A
Rated Operational Power AC-23A (P_e)	(380 ... 415 V) 450 kW (500 V) 560 kW (690 V) 800 kW
Conventional Free-air Thermal Current (I_{th})	q = 40 °C 800 A
Conventional Thermal Current (I_{the})	Fully Enclosed 800 A
Rated Impulse Withstand Voltage (U_{imp})	12 kV
Rated Insulation Voltage (U_i)	1000 V
Rated Operational Voltage	1000 V
Rated Short-time Withstand Current Low Voltage (I_{cw})	for 1 s 20 kiloampere rms
Motor Operational Voltage	220 ... 240 V AC
Power Loss	40 W
Pollution Degree	3
Handle Color	Black
Handle Type	Direct mounted handle Mechanism at the End of the Switch
Distance Between Phases	Standard
Position of Line Terminals	Top In - Bottom Out, Bottom In - Top Out
Operating Mode	Front operated
Mounting Type	Base mounting
Number of Poles	3
Degree of Protection	Front IP20
Transition Type	Open

Environmental

Environmental Information	1SCC303036D0202
---------------------------	-----------------

Certificates and Declarations (Document Number)

Declaration of Conformity - CE	1SCC303018D0201
Environmental Information	1SCC303036D0202
Instructions and Manuals	1SCC303002M0204
RoHS Information	1SCC303036D0202

Container Information

Package Level 1 Units	1 piece
Package Level 1 Width	310 mm
Package Level 1 Depth / Length	560 mm
Package Level 1 Height	320 mm
Package Level 1 Gross Weight	22.08 kg
Package Level 1 EAN	6417019379654

Classifications

Object Classification Code	Q
ETIM 5	EC000216 - Switch disconnecter
ETIM 6	EC000216 - Switch disconnecter
ETIM 7	EC000216 - Switch disconnecter
ETIM 8	EC000216 - Switch disconnecter
UNSPSC	39122233
WEEE Category	5. Small Equipment (No External Dimension More Than 50 cm)
E-Number (Finland)	3650302

Categories

Low Voltage Products and Systems → Switches → Change-over and Transfer Switches → Motorized Change-over Switches

