

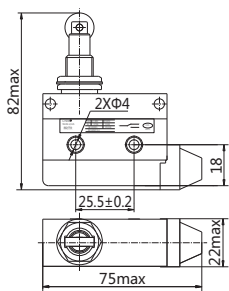


Type(recommend to adopt)	Operating mode	Type of replacement(discontinue)				
YBLXW-6/11BZ	Panel mounting plunger type	-AZ/7310	-TZ/7310	-MN/5310	-ZL/15G03	-D4MC/5000
YBLXW-6/11CA	Long press-button type					
YBLXW-6/11DA	Short press-button I type	-AZ/7110	-TZ/7110	-MN/5110	-ZL/15G01	
YBLXW-6/11DA2	Short press-button II type	-AZ/7100	-TZ/7100	-MN/5100		
YBLXW-6/11CG	Long triangle type	-AZ/7120	-TZ/7120	-MN/5120	-ZL/15G060	-D4MC/1000
YBLXW-6/11DG	Short triangle type	-AZ/7140	-TZ/7140	-MN/5140	-ZL/15G06	-D4MC/1020
YBLXW-6/11CL	Long spar roller type	-AZ/7121	-TZ/7121	-MN/5121	-ZL/15G07	-D4MC/2000
YBLXW-6/11DL	Short spar roller type	-AZ/7141	-TZ/7141	-MN/5141	-ZL/15G09	-D4MC/2020
YBLXW-6/11CDL	Long spar one-way roller type	-AZ/7124	-TZ/7124	-MN/5124		
YBLXW-6/11DDL	Short spar one-way roller type	-AZ/7144	-TZ/7144	-MN/5144	-ZL/15G070	-D4MC/3030
YBLXW-6/11HL	Lateral roller type	-AZ/7312	-TZ/7312	-MN/5312	-ZL/15G031	-D4MC/5040
YBLXW-6/11ZL	Straight roller type	-AZ/7311	-TZ/7311	-MN/5311	-ZL/15G030	-D4MC/5020
YBLXW-6/11W1	Universal I type	-AZ/7161	-TZ/7161	-MN/5161		
YBLXW-6/11W2	Universal II type	-AZ/7166	-TZ/7166	-MN/5166		
YBLXW-6/11W3	Universal III type	-AZ/7169	-TZ/7169	-MN/5169		

Model	Performance characteristic	Movement (OF)max	Movement route (PT)max	Overtravel (OT)min
YBLXW-6/11BZ		≤8N	≤3.5mm	≥1.2mm
YBLXW-6/11CA		≤8N	≤3.5mm	≥1.2mm
YBLXW-6/11DA		≤8N	≤3.5mm	≥1.2mm
YBLXW-6/11DA2		≤8N	≤3.5mm	≥1mm
YBLXW-6/11CG		≤5N	≤12mm	≥4mm
YBLXW-6/11DG		≤6N	≤10mm	≥2mm
YBLXW-6/11CL		≤5N	≤12mm	≥4mm
YBLXW-6/11DL		≤6N	≤10mm	≥2mm
YBLXW-6/11CDL		≤6N	≤12mm	≥4mm
YBLXW-6/11DDL		≤5N	≤10mm	≥2mm
YBLXW-6/11HL		≤8N	≤3.5mm	≥1.2mm
YBLXW-6/11ZL		≤8N	≤3.5mm	≥1.2mm
YBLXW-6/11W1		≤2N	≤30°	-
YBLXW-6/11W2		≤2N	≤30°	-
YBLXW-6/11W3		≤2N	≤30°	-

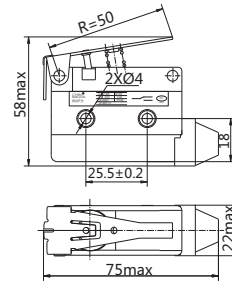
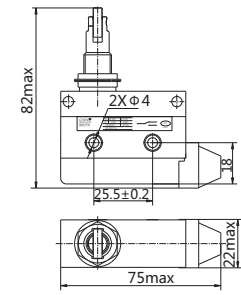
#### 4. Overall and mounting dimensions

YBLXW-6/11ZL



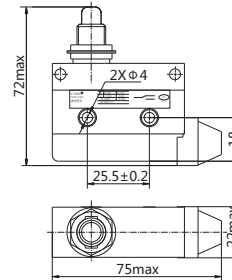
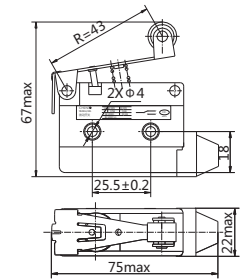
YBLXW-6/11HL

YBLXW-6/11DG



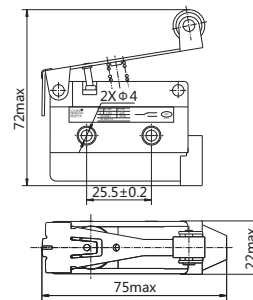
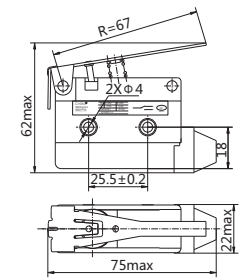
YBLXW-6/11DL

YBLXW-6/11BZ



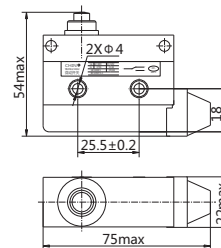
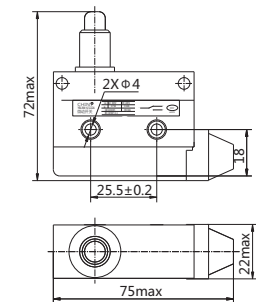
YBLXW-6/11CG

YBLXW-6/11CL

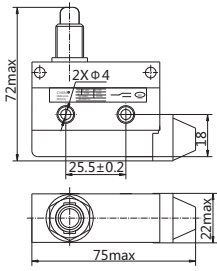


YBLXW-6/11DA

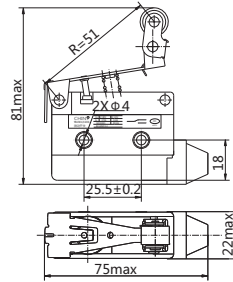
YBLXW-6/11DA2



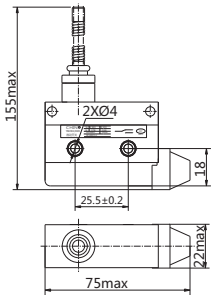
YBLXW-6/11CA



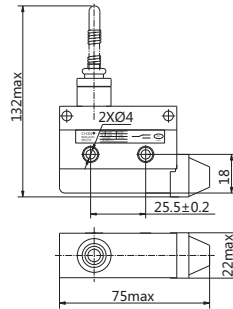
YBLXW-6/11DDL



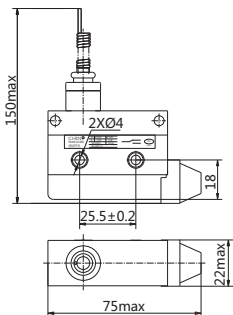
YBLXW-6/11W1



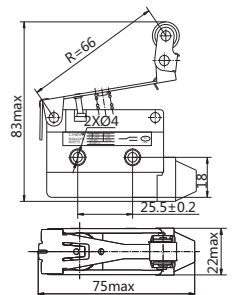
YBLXW-6/11W2



YBLXW-6/11W3



YBLXW-6/11CDL



## 5. Order information

5.1 When ordering, the user shall specify the switch type, name and quantity.

For example: YBLXW-6/11DA. 100 Microswitch;

5.2 User note:

5.2.1 Please do not use it in hot water and water vapor condition.

5.2.2 Please do not use it directly in oil and water

5.2.3 Please install the equipment in the place that vibration does not occur, also no resonance occurs.