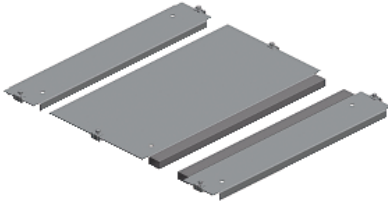


Product data sheet

Specifications



Spacial SF 1 entry cable gland plate - fixed by clips - 800x800 mm

NSYEC881

Main

Range	Spacial
Product or component type	Cable gland plate
Accessory / separate part category	Cable management accessory
Anwendung	Multi-purpose Electronic application
Range compatibility	Spacial SF Spacial SFM
Mounting location	Enclosure bottom
Cable gland type	Standard
Cable entry	1 entry
Device composition	fixing elements 1 plate self extinguishing polyurethane adhesive gasket with cross-section of 15 x 25 mm
Quantity per set	Set of 1
Material	Galvanised steel

Complementary

Height	30 mm
Width	800 mm nominal: 616 mm useful:
Depth	800 mm nominal: 655 mm real:
Thickness	1.5 mm

Packing Units

Unit Type of Package 1	PCE
Number of Units in Package 1	1
Package 1 Weight	6.48 kg
Package 1 Height	65.5 cm
Package 1 width	35.0 cm
Package 1 Length	3.0 cm

Offer Sustainability

Sustainable offer status	Green Premium product
REACH Regulation	REACH Declaration
REACH free of SVHC	Yes
EU RoHS Directive	Pro-active compliance (Product out of EU RoHS legal scope) EU RoHS Declaration
Mercury free	Yes
RoHS exemption information	Yes
China RoHS Regulation	China RoHS declaration Product out of China RoHS scope. Substance declaration for your information
Environmental Disclosure	Product Environmental Profile

Contractual warranty

Warranty	18 months
----------	-----------