

# Product data sheet

Specifications



## Pressure sensors XM, pressure sensor XMP, 12 bar, G 1/4 female, 2 NC, without control type

XMPA12B2131

### Main

Range of product	OsiSense XM
Pressure sensor type	Electromechanical pressure sensor
Pressure sensor name	XMP
Pressure rating	12 bar
Fluid connection type	G 1/4 (female) conforming to ISO 228
Controlled fluid	Air (0...70 °C) Fresh water (0...70 °C) Sea water (0...70 °C)
Cable entry	2 entries tapped for Pg 13.5 cable gland conforming to NF C 68-300
Contacts type and composition	2 NC snap action
Product specific application	-
Pressure switch type of operation	Regulation between 2 thresholds
Electrical connection	Screw-clamp terminals, clamping capacity: minimum : 2 x 4 mm <sup>2</sup>
Electrical circuit type	Power circuit
Scale type	Adjustable differential
Local display	Without
Sale per indivisible quantity	1

### Complementary

Adjustable range of switching point on falling pressure	0.3...10.3 bar
Adjustment range high setting	1.3...12 bar
Possible differential minimum at low setting	1 bar
Possible differential minimum at high setting	1.7 bar
Possible differential maximum at high setting	8.4 bar
Destruction pressure	30 bar
Type of decompression valve	Without
Control type	Without

<b>Terminal block type</b>	4 terminals
<b>Pressure actuator</b>	Diaphragm
<b>Materials in contact with fluid</b>	Chromated zinc alloy Canvas covered nitrile
<b>Enclosure material</b>	PA impregnated with fibreglass
<b>Operating position</b>	Any position
<b>Maximum operating rate</b>	10 cyc/mn
<b>Repeat accuracy</b>	3.5 %
<b>[Ui] rated insulation voltage</b>	500 V conforming to EN/IEC 60947-1
<b>[Uimp] rated impulse withstand voltage</b>	6 kV conforming to EN/IEC 60947-1
<b>Maximum resistance across terminals</b>	25 MOhm conforming to IEC 60255-7 category 3 25 MOhm conforming to NF C 93-050 method A
<b>Electrical durability</b>	1000000 cycles 1.5 kW, operating rate <10 cyc/mn, load factor: 0.4, 400 V AC 3 phases 500000 cycles 3 kW, operating rate <10 cyc/mn, load factor: 0.4, 400 V AC 3 phases 600000 cycles 1.5 kW, operating rate <10 cyc/mn, load factor: 0.4, 230 V AC 3 phases 700000 cycles 2.2 kW, operating rate <10 cyc/mn, load factor: 0.4, 400 V AC 3 phases
<b>Mechanical durability</b>	1000000 cycles
<b>Setting</b>	Nut
<b>Net weight</b>	0.43 kg
<b>Terminals description ISO n°1</b>	(3-4)NC (1-2)NC
<b>Depth</b>	98 mm
<b>Height</b>	106 mm
<b>Width</b>	57 mm

## Environment

<b>Product certifications</b>	EAC
<b>Standards</b>	CE EN/IEC 60947-4-1
<b>Ambient air temperature for operation</b>	-25...70 °C
<b>Ambient air temperature for storage</b>	-40...70 °C
<b>Vibration resistance</b>	3 gn conforming to IEC 60068-2-6 (f = 10...500 Hz)
<b>Shock resistance</b>	50 gn conforming to IEC 60068-2-27
<b>Electrical shock protection class</b>	Class I conforming to IEC 60536
<b>IP degree of protection</b>	IP54 conforming to EN/IEC 60529

## Packing Units

<b>Unit Type of Package 1</b>	PCE
<b>Number of Units in Package 1</b>	1
<b>Package 1 Weight</b>	501.0 g
<b>Package 1 Height</b>	6.2 cm
<b>Package 1 width</b>	11.5 cm
<b>Package 1 Length</b>	17.0 cm
<b>Unit Type of Package 2</b>	S03
<b>Number of Units in Package 2</b>	20

Package 2 Weight	10.733 kg
Package 2 Height	30.0 cm
Package 2 width	30.0 cm
Package 2 Length	40.0 cm

## Offer Sustainability

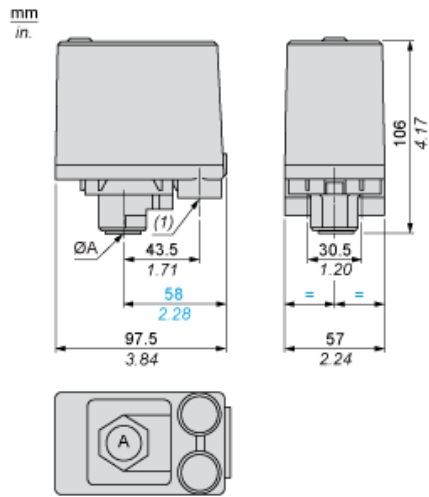
Sustainable offer status	Green Premium product
REACH Regulation	<a href="#">REACH Declaration</a>
EU RoHS Directive	Pro-active compliance (Product out of EU RoHS legal scope) <a href="#">EU RoHS Declaration</a>
Mercury free	Yes
RoHS exemption information	<a href="#">Yes</a>
Environmental Disclosure	<a href="#">Product Environmental Profile</a>
California proposition 65	WARNING: This product can expose you to chemicals including: Diisononyl phthalate (DINP), which is known to the State of California to cause cancer, and Di-isodecyl phthalate (DIDP), which is known to the State of California to cause birth defects or other reproductive harm. For more information go to <a href="http://www.P65Warnings.ca.gov">www.P65Warnings.ca.gov</a>

## Contractual warranty

Warranty	18 months
----------	-----------

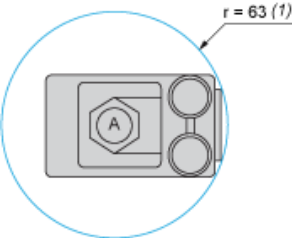
Dimensions

Without Decompression Valve



**Minimum Mounting Clearance**

---

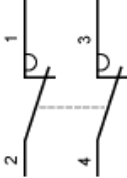


**ØA =** G1/4  
**(1)** Minimum clearance zone for screwing-on pressure switch at point A

**Wiring Diagram**

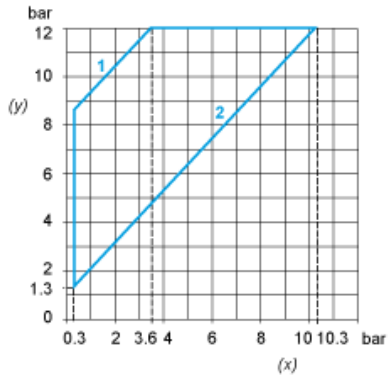
---

**Terminal Connections**

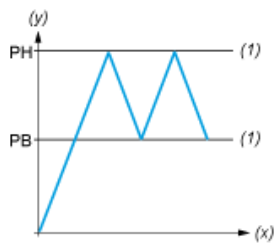


**Curves**

**Operating Curves**



- (y) Rising pressure
- (x) Falling pressure
- 1 : Maximum differential
- 2 : Minimum differential



- (y) Pressure
- (x) Time
- (1) Adjustable value
- PH : High point
- PB : Below point